

Optic nerve coloboma with peripapillary choroidal neovascular membrane

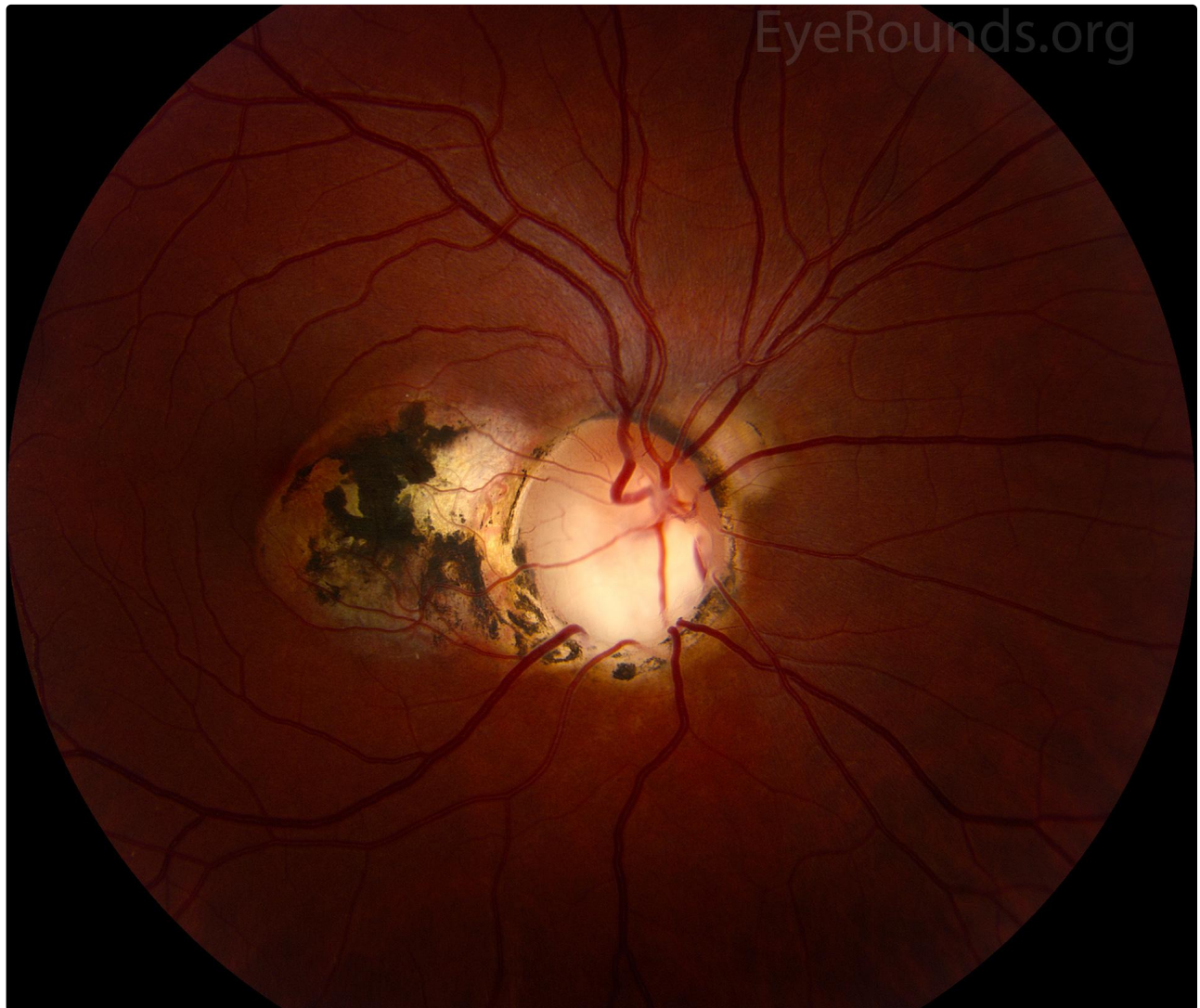
Category(ies): Retina, Vitreous, Pediatrics

Contributor: [Jesse Vislisel, MD](#)

Photographer: Antoinette Venckus, CRA



Colobomas of the optic nerve result from incomplete closure of the embryonic fissure during development of the eye. They may be associated with colobomas of the choroid, retina, or iris. Some colobomas can be confused with glaucomatous cupping of the optic disc.



This young patient with an optic nerve coloboma has the appearance of disc cupping and developed a peripapillary choroidal neovascular membrane that was involuted at the time of this photograph.

[Enlarge](#)

[Download](#)

References:

- 1.
- 2.

Image Permissions:



Ophthalmic Atlas Images by EyeRounds.org, The University of Iowa are licensed under a [Creative Commons Attribution-NonCommercial-NoDerivs 3.0 Unported License](https://creativecommons.org/licenses/by-nc-nd/3.0/).

Address

University of Iowa
Roy J. and Lucille A. Carver College
of Medicine
Department of Ophthalmology and
Visual Sciences
200 Hawkins Drive
Iowa City, IA 52242

[Support Us](#)

Legal

Copyright © 2019 The University of
Iowa. All Rights Reserved
[Report an issue with this page](#)
[Web Privacy Policy](#) |
[Nondiscrimination Statement](#)

Related Links

[Cataract Surgery for Greenhorns](#)
[EyeTransillumination](#)
[Gonioscopy.org](#)
[Iowa Glaucoma Curriculum](#)
[Iowa Wet Lab](#)
[Patient Information](#)
[Stone Rounds](#)
[The Best Hits Bookshelf](#)

EyeRounds Social Media

Follow



Receive notification of new cases,
[sign up here](#)
[Contact Us](#)
[Submit a Suggestion](#)